



## 2008 Princess 54 £419,950 VAT UK TAX paid

2008 Princess 54 fitted with twin Volvo Penta D12-800's (775hp) diesel engines - Approx 850 engine hours (Only 2 owners).

**\*\* NOTE - THIS IS NOT A BROKERAGE BOAT -**  
This STOCK boat comes with clear and full title and VAT papers. Part exchange welcome and encouraged. Finance plans too & all supported by our 24/7 triple-award winning customer support team. This boat has also been checked and prepared to a high standard. Please take this into account when comparing against other boats! **\*\***

Beautiful example Princess 54, professionally maintained. Benefiting from; 2 x Volvo D12-800's, Crew cabin, Generator, Air Conditioning, Bow & Stern Thrusters, Raymarine electronics (GPS/Radar/VHF/AIS), Leather Upholstery, Passerelle, Sat TV, Onan Generator, Trim Tabs, Ice maker, Camera system, holding tank, Teak cockpit, Additional chain, Sat TV - To arrange a viewing, please contact Boats.co.uk on 01702 285 885..

## Specification

Stock number:	ES4291
Manufacturer:	Princess
Model:	54
Year:	2008
Price:	£419,950 VAT UK TAX paid
Location:	Boats.co.uk HQ, Essex Marina, United Kingdom

### Dimensions

LOA:	16.59 m - 54ft 5in
Beam:	4.57 m - 14ft 12in
Displacement:	23500 kgs

### Engine(s)

Engine Mfr:	Volvo D12-800
Fuel:	Diesel
No of Engines:	2
Engine Hours:	853
Engine Power (HP):	775
Drive Type:	Shaftdrive

### Accommodations

Guest cabins:	3
Guest berths:	6

### Highlights

- Bow & stern thruster
- Beautiful example
- Med spec
- Generator

## Accommodation

---

Toilet

Shower

**Crew cabin (fitted out)** - Single bed with electric toilet and wash basin

## Galley

---

Microwave

Fridge

Freezer

Hob

Sink & drainer

## Navigation Equipment

---

**Navigation lights**

**Compass**

**Depth instrument** - Raymarine ST60

**Autopilot**

**VHF**

**Plotter** - Raymarine E120 GPS/Plotter

**Speed instrument** - Raymarine ST60

**Radar** - Raymarine HD Digital

**AIS** - To Raymarine system

## Electrical Equipment

---

**Stern thruster**

**Bow thruster**

**Battery charger**

**Battery**

**Generator** - Onan 13.5KVA

**Bilge pump**

**Air conditioning**

**Television** - LCD TV to all cabins

**Shorepower**

**Water heater**

**Hot & cold water system**

**Holding tank**

**Satellite TV** - KVH M3 Sat TV system including dummy dome

**Camera system**

**Passerelle** - 2.75M (320KG) lift

**Washing machine** - below stairs to lower cabins

## General Equipment

---

**Anchor**

**Anchor winch**

**Covers**

**Bathing platform**

**Hydraulic passarelle**

**Teak laid cockpit**

**Hot & cold swimming shower**

**Hydraulic trim tabs**

**Trim Tabs**

**Ice Maker** - To saloon sideboard

## Disclaimer

---

*All the information on this advert is correct to the best of our knowledge, but cannot be guaranteed until the point of sale.*





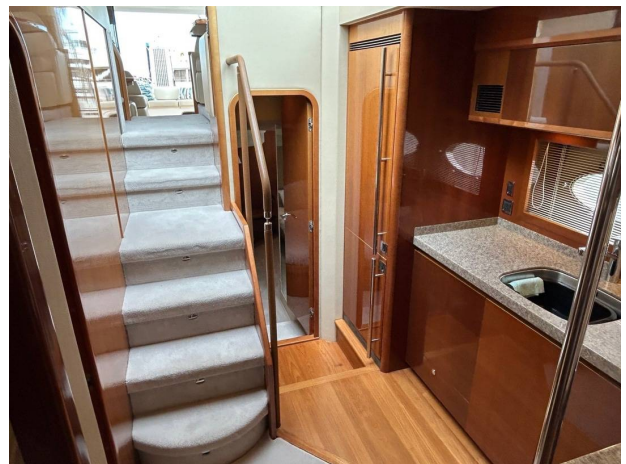
















### Buy with peace of mind

- Worldwide Customer Service with Sales Centres in Essex & Poole - UK, Denia - mainland Spain, Cala d'Or - Mallorca
- Comprehensive 80 point checklist and Full Title Guarantee - Builders Certificate, VAT proof, clear title and history check
- 3 months warranty on all engines, drives and major systems. Extended warranties available
- Part exchange welcomed and encouraged
- MBY Customer Service Award - **triple** winners. Customer care and 24/7 telephone advice

